



Aerials | Dishes | Set top boxes | Headends | Fibre optic | Multi switches | Amplifiers | Outlets | Home accessories | Fibre cabinets | Enclosures



Triax DAP

Fibre Dish Range

- perfect choice for extreme environmental conditions



TRIAX - your ultimate connection

Triax DAP Fibre Dish advantages

- ✓ Fibreglass reflector
- ✓ Ideal for use in extreme environmental conditions
- ✓ Simple to install
- ✓ Pole Mount
- ✓ Strong mast brackets



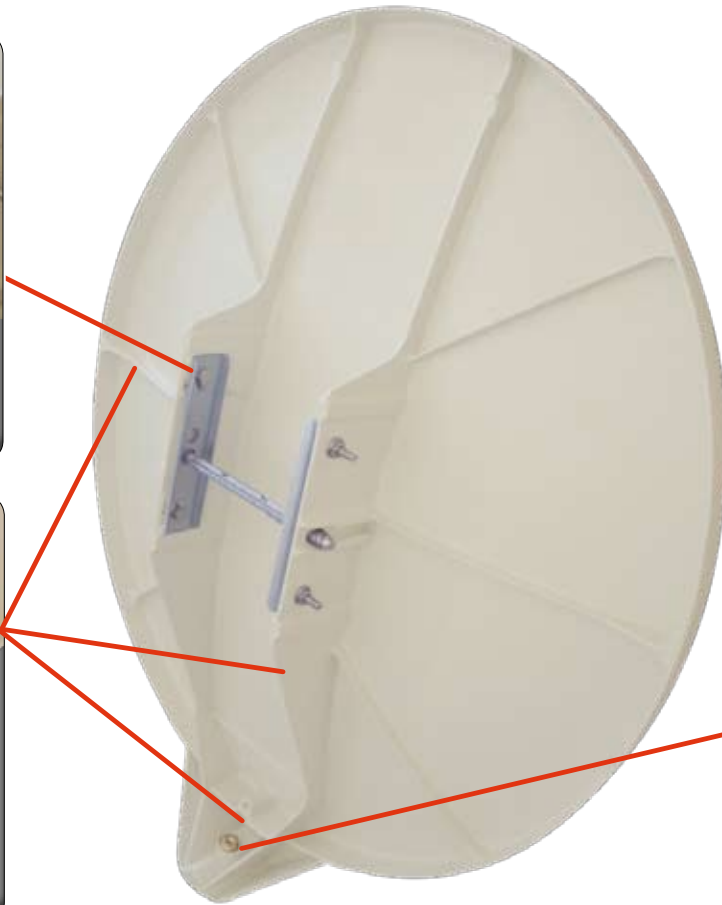
The galvanized steel fasteners strengthen the reflector back
Very strong bracket



Stainless steel U-Bolt, nut, washers and fastenings
Resistant to corrosion



Dish (front and back) moulded in 1 piece
Resistant to corrosion



Brass nut moulded in the dish

Perfect mounting brackets

High quality mounting accessories....

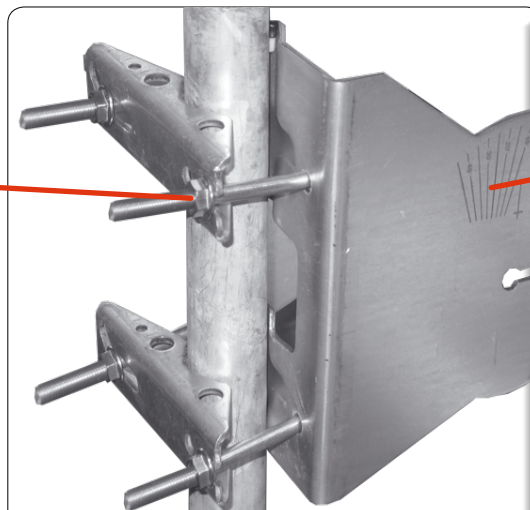
Mast bracket in galvanized steel
Dimension 130 x 35.5 x 3 mm
(DAP 910 + 911)

Elongated hole for easy install

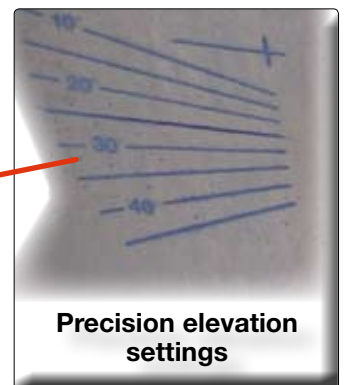
Anti-slide system for easy tightening



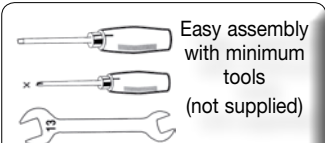
Mast brackets made for perfect alignment while tightening



Double mast bracket and U-Bolts to fix firmly to the mast (DAP 910 + 911)



Precision elevation settings



Easy assembly with minimum tools (not supplied)

(DAP 910 + 911)

Perfect reception quality for DTH and IRS installation



— Polyurethane layer
 ■ Glass fibre
 XXXX Aluminium glass fibre woven mesh

Polyester reflector with glass fibre, aluminium woven mesh and polyurethane lacquer on the reflector surface

High reception quality

DAP dishes are designed to survive speeds beyond ETSI 300784 Standard

ETSI 300784 Standard which requires the dish to be exposed to varying wind velocities of up to 42 m/s from all directions and elevations

2 colours

Cream RAL 1013	Anthracite RAL 7016
--------------------------	-------------------------------

Threaded bolt with knurled wheel to secure the feedarm to the dish

Internal channel incorporated in feedarm for discreet cable lay

Attractiveness and quality

Accessories

The dish is interlocked on the AZ-EL Mount

Very simple to operate thanks to the click-on system
 (except DAP 710 + 711)

Special strengthened structure **Rigidity**

The structure takes on the shape of the mast - **Easy assembly**

AZ/EL mount in 3 mm thick galvanized steel **Resistant to corrosion**

"Click-on" notches **Easy assembly**

MFD 85
Art. No. 200851
 4° - 10° Flexi-block for DAP 910 and DAP 911 dishes - Basic 6°

Additional U-Bolt set
Art. No. 362700
 U-Bolt, 2 stainless steel nuts and mast bracket for DAP 710 + 711

Triax DAP Fibre Dish Range



DAP 610



DAP 910



DAP 710



DAP 611



DAP 911



DAP 711

Type		DAP 610	DAP 611	DAP 710	DAP 711	DAP 910	DAP 911
Art. No.		362610	362611	362710	362711	362910	362911
Colour		Cream RAL 1013	Anthracite RAL 7016	Cream RAL 1013	Anthracite RAL 7016	Cream RAL 1013	Anthracite RAL 7016
Dimensions L x H	cm	56 x 61		62,5 x 72		86 x 94	
Noise temperature	°K	< 35	< 35	< 35	< 35	< 30	< 30
Gain @ 12.625 MHz	dB	36	36	37,5	37,5	39,7	39,7
Effeciency	%	70	70	70	70	70	70
Plastic LNB holder	mm	Ø 40	Ø 40	Ø 40	Ø 40	Ø 40	Ø 40
Elevation range		from 10° to 55°		from 10° to 55°		from 10° to 55°	
Mast diameter	mm	from 40 to 60		from 40 to 60		from 50 to 60	
Inox U-bolt		1 U-Bolt		1 U-Bolt		2 U-Bolt	

Aerials | Dishes | Set top boxes | Headends | Fibre optic | Multi switches | Amplifiers | Outlets | Home accessories | Fibre cabinets | Enclosures

Find more information on....

www.triax.com

TRIAX A/S

Bjørnkærvej 3 • DK-8783 Hornsyld
+45 76 82 22 00 • +45 75 68 79 66
mail: triax@triax.dk • www.triax.com

Triax reserves the right to change specifications without prior notification